



Acer platanoides Crimson King
Height: 40-50 ft
Spread: 25-30 ft
Zone: 3-7



Ageratum Artist™ Series
Height: 8-12 in
Spread: 10-14 in
Zone: 9-10



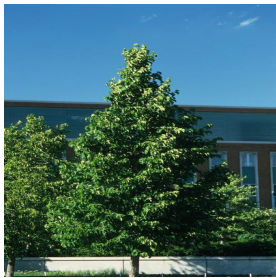
Bidens ferulifolia Goldilocks Rocks®
Height: 12-14 in
Spread: 14-18 in
Zone: 9-11



Capsicum annuum Purple Flash
Height: 12-24 in
Spread: 15-20 in
Zone: 9-11



Carya illinoensis
Height: 75-100 ft
Spread: 40-70 ft
Zone: 5-9



Corylus columna
Height: 50-60 ft
Spread: 20-30 ft
Zone: 4-7



Cosmos sulphureus Cosmic Orange
Height: 12-18 in
Spread: 12-18 in
Zone: 10-11



Cyperus involucratus Baby Tut®
Height: 20-32 in
Spread: 20-36 in
Zone: 9-11



Hemerocallis x Siloam June Bug
Height: 18-24 in
Spread: 18-24 in
Zone: 3-9



Iris germanica Coming Storm
Height: 36-38 in
Spread: 12-24 in
Zone: 3-9



Malus Purple Prince
Height: 15-20 ft
Spread: 15-20 ft
Zone: 4-8



Miscanthus sinensis Adagio
Height: 4-5 ft
Spread: 3-4 ft
Zone: 5-9



Paeonia lactiflora Alley Cat
Height: 30-36 in
Spread: 24-36 in
Zone: 3-8



Pelargonium x hortorum Classic Dark Salmon
Height: 10-12 in
Spread: 12-14 in
Zone: 10-11



Petunia Sweetunia Johnny Flame
Height: 10-12 in
Spread: 24-36 in
Zone: 10-11



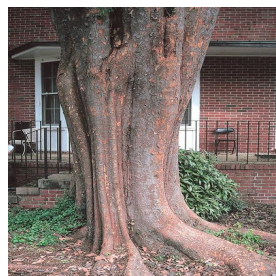
Salvia farinacea Evolution White
Height: 16-20 in
Spread: 14-16 in
Zone: 8-10



Symphyotrichum (Aster) dumosus Sapphire
Height: 12-24 in
Spread: 12-24 in
Zone: 4-8



Syringa x Bloomerang® Purple
Height: 4-5 ft
Spread: 4-5 ft
Zone: 3-7



Ulmus parvifolia Allee®
Height: 60-70 ft
Spread: 35-55 ft
Zone: 4-9



Ulmus parvifolia Emerald Prairie
Height: 35-40 ft
Spread: 25-30 ft
Zone: 5-8



K-State Research and Extension
2021 Throckmorton Plant Sciences Center
Kansas State University
Manhattan, KS 66506



**Weigela florida Wine and
Roses®**
Height: 4-5 ft
Spread: 4-5 ft
Zone: 4-8